

# ONE CHILD...ONE life...a WORLD of OPPORTUNITY

at **GIRLS' HAVEN** of Beaumont, TX

December 2018



Their future is **>** (*greater than*) their past  
**BECAUSE OF YOU.**

Vol. 01

{ This first edition is brought to you through the generous contribution of **ubeo** BUSINESS SERVICES }  
Learn about UBEQ, at [ubeo.com](http://ubeo.com) or call 409.240.2203



Turning Tragedy  
to **TRIUMPH**  
[www.girlshaveninc.org](http://www.girlshaveninc.org)

**GROWING** in a spirit of thankfulness – may we seek to focus on this daily! May the children we serve see our work in their lives and realize they have much to be thankful for even in the midst of their circumstances. This is our wish this season for our family here at Girls' Haven and for yours as well.

# from *the* GH Team

**AS OUR FAITHFUL FRIENDS AND DONORS**, we hope you enjoy this first edition of our **Turning Tragedy to Triumph** newsletter. We have worked hard to bring you stories and features we hope you will find enjoyable and informative. We know you have a million things to do right now – cleaning up the house before everyone arrives for the holidays or heading to the mall to work through your Christmas shopping list. But we invite you to sit down, relax and take a few minutes to read the stories of people we can all learn something from this season. We don't want you to miss out on the blessings in these great stories!

So please turn the page and read about Who We Are, the Services we provide and the Special Evening Event coming up on February 1<sup>st</sup>, 2019. You will also find an interesting read; the Divine Work of Redemption featuring two of our residents. Then take a look at our Information and Announcements and our Dedicated New Faces. We have some new people we want you to meet and all kinds of good news to share!

And we must mention a great way to give during the season. This Christmas when you give a gift to Girls' Haven in honor of someone, we will send them a special Christmas card letting them know of your donation. Invite your friends to be a part of changing a child's life here at Girls' Haven where we work hard; **Turning Tragedy to Triumph!** It's what this season is all about, and we know you will want to be a part of it. As always, we welcome your comments. Email us at [jade.rayburn@girlshaveninc.org](mailto:jade.rayburn@girlshaveninc.org) or call 409.832.6223. Merry Christmas, and please stop by and visit us soon!

**ALWAYS GROWING WITH KIDS,**  
The Girls' Haven staff

---

**TURNING TRAGEDY** to **TRIUMPH** was chosen as the name of this publication because we have a deep desire to change the circumstances of each child who comes to us:

**TURNING** past painful circumstances to future positive outcomes.

**TRAGEDY** teaches us all not to live in the *why...*but rather...in the *what now*.

**TRIUMPH** is the ultimate success...and celebrating that success after overcoming painful circumstances.

## BOARD of DIRECTORS

Christy Mellen  
PRESIDENT

John Ceravolo  
VICE PRESIDENT

Cary Coffin  
TREASURER

Lanell Wilson  
SECRETARY

Richard Malone  
OFFICER AT LARGE

Rozanne Blount  
BOARD DIRECTOR

Margueritte Humphrey  
BOARD DIRECTOR

Turning Tragedy  
to **TRIUMPH**  
[www.girlshaveninc.org](http://www.girlshaveninc.org)

It's easy to see how Girls' Haven creates a **WORLD** of **OPPORTUNITY** for each child, as well as for those blessed to work with them, but one of the greatest opportunities available is for friends and supporters to be involved with **Girls' Haven**.



02  
Page

from **the** GH Team



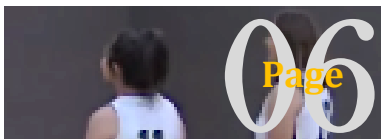
04  
Page

who we are  
and our services



05  
Page

information  
and announcements



06  
Page

the divine work  
of redemption



08  
Page

an evening amid  
the stars - GALA  
annual event



09  
Page

q and a: with Jade Rayburn



10  
Page

dedicated **new** faces



a side **note**

with Eureka Edwards, *Residential Supervisor*

During my 14-year career at **Girls' Haven**, I have had the awesome pleasure of being part of shaping lives for children. We see it each day when the girls smile at us because they trust that they are in a safe environment. I would never say that I know what these girls have been through...in fact none of us could actually say that. However, we know that building healthy relationships with them provides support for hope that many of them did not have before coming to us. Our daily responsibilities do not include judging our girls...it's to ensure that they are shown worth regardless of the mistakes that they make. I remind myself quite often that you cannot expect children to exhibit behaviors that have yet been taught. We spend our time teaching proper skills that begin the healing process for them. It's recognized that we are just a moment of time in each child's journey in life. We will continue that journey here at **GH** alongside them. Thank you for supporting us!

Turning Tragedy  
to **TRIUMPH**  
[www.girlshaveninc.org](http://www.girlshaveninc.org)



## WE ARE

Trained professionals that show consistent love and compassion for our residents at Girls' Haven. We invest in the lives of our residents, helping them find a sense of belonging that will support *maximizing* their full potential.

- **We Serve** primarily children referred by the foster care & juvenile justice systems, private parties, counseling networks, churches & schools
- **Ages 6 through 17** for basic care services
- **Ages 18 through 22** for Independent Living
- **Our Community** is at the heart of Girls' Haven. From the beginning a product of this community, through our nearly 25 years: you have poured in your time, heart, gifts and funds
- **Our Funding** comes primarily through community donations and grants: 2018 FISCAL YEAR: Only **33%** of our funding came from the state
- **Your Gifts Allow Us to Fight For Our Kids**, giving them much more than food and shelter
- **Our Success** shows itself over time:
  - \***In The Short Term** as our kids realize their own worth and the value of others, they become leaders in their areas of influence and a blessing to the world around them
  - \***In The Long Term** as they form their own families and carry the values and truths they learned at Girls' Haven into adulthood, creating generational change
- **We Are Grateful** as we look to the future knowing we can continue to trust you, our community, to include us in your story



## OUR SERVICES

- 32-bed non-secure basic care general residential operation
- Programs & services licensed by the Texas Department of Family & Protective Services
- Homelike environment with only 1 girl per bedroom (*unless sisters or close friends*)
- Length of stay varies; 30 days to several years
- On-site licensed professional counseling; weekly individual & group therapy
- Trauma informed care; Trust Based Relational Intervention (TBRI)©
- On-site facilities for recreational activities; gym, playground, courtyard, soccer field & racquetball court
- On-site cafeteria for food services
- On-site charter school for grades Pre-K - 8th
- 501 (c) (3) non-profit organization designated by the IRS



## OUR MISSION

Girls' Haven seeks to provide a safe, nurturing environment for girls effected by physical, sexual or emotional abuse, neglect, exploitation, abandonment or severe family dysfunction.

Turning Tragedy  
to **TRIUMPH**  
[www.girlshaveninc.org](http://www.girlshaveninc.org)

**IMPORTANT STUFF** *we want you to know*

# information and announcements

## INFORMATION & AWARENESS LUNCHEON

- Beginning January 2019, Girls' Haven will host the first of many monthly I & A Luncheons. Tours of GH's facility and school, Q & A, and lunch with staff will be included. For more information, contact Jade Rayburn at 409.832.6223.

## GALA ANNUAL EVENT

- Friday, February 1<sup>st</sup>, 2019 at 6:30pm, Girls' Haven will be hosting our annual Gala; Evening Amid the Stars Dinner. To reserve your spot or for additional information, contact Jade Rayburn at 409.832.6223.

## SUPERVISED INDEPENDENT LIVING

- Girls' Haven is in the second year of the SIL Program and we are currently accepting applications for admission. For more information, contact Leslie Valentine or Alan Apperson at 409.832.6223.



## wish<sup>list</sup>

In-kind contributions allow you to participate in the ministry of Girls' Haven by providing goods, skills, or services. And they are tax deductible contributions.

### ITEMS

- Beef & Chicken
- Vacuum Cleaner
- New Bath Towels
- 2 Laptop Computers and/or Tablets *(for school projects & homework)*
- 1 Van *(for transporting residents)*
- Campus Storage Building *(for tools, bikes & sports equipment)*
- Art supplies *(canvas & paints for the older kids and supplies for the younger children)*

### TIME

- Volunteer Activities Coordinator *(10 hrs per wk)*
- 5 Mentor Coaches

(If you are interested in volunteering or to get involved at Girls' Haven, please contact us)

*Thank you to everyone who had a part in fulfilling so many of the items on our previous list!*

## WHEN YOU GIVE TO GIRLS' HAVEN OF BEAUMONT, TEXAS,

you give so much more than food, shelter and safety; you provide children with a home and family where they:

- are nurtured physically, spiritually and educationally
- learn their identity and explore their talents
- learn what healthy relationships are and what they do
- learn to value others and the joy of serving others
- are a valued part of a larger community

Turning Tragedy  
to **TRIUMPH**  
[www.girlshaveninc.org](http://www.girlshaveninc.org)

WE  
BELIEVE.

"For those who BELIEVE, no proof is NECESSARY. For those who do not BELIEVE, no proof is POSSIBLE." *Stewart Chase*

P.

## THE DIVINE WORK OF REDEMPTION

We are incredibly proud of the work we do with foster kids. We are proud of our mission statement and our team, the steps we take to accomplish that mission statement and the people working alongside us. We are excited about what goes on at Girls' Haven and the process of redemption that daily takes place here.

But we cannot serve our children well if we don't take time to remember where they have come from and why they are here - if we don't recognize they are with us as a direct result of great loss.

Perhaps you remember going to camp as a child or spending the night at a friend's or relative's house for the first time - feeling unsettled, out-of-place, missing your home and your bed and your family...What our kids experience is similar to that - only amplified.

\*Hanna (13) & \*Sarah (14) came to us during the fall of 2016; adorable sisters - confused, sad, lonely and nervous. They had not anticipated being removed from their family. Instead, everything they knew was, suddenly and without warning, gone. Coming from a three-month stay in an emergency shelter, both of them initially feared the environment...unsure if they were coming into a similar place as their previous placements. Hanna remembers crying on the first day and Sarah didn't talk to anyone. However, both were grateful that they were allowed to be placed together and not sent to separate placements; a decision that often happens to siblings placed in the care of the state.

Over time, these brave sisters began to feel the stability that GH was providing for them. Hanna's crying slowly decreased, and Sarah began to open up more often. The trust they began to feel led them to building relationships with the other residents and staff. But both knew that they had a long and hard road ahead of them and additional support for themselves was needed. Together, they concluded to turn their circumstances into positive actions. That additional support system became the sport of basketball. Both girls joined their school's team over the past seasons and they have stuck with it since. Hanna, a starting Point Guard for her team says, "I get to control the ball and the offense, and it feels good to be needed! I am able to use the game as a coping skill to deflect anger I feel from being in foster care." Hanna believes she would not have played basketball if they were still with family; because of the lack of structure that was in the home. At GH, she is able to be on the

court doing something she loves. Sarah is a starting post player for her high school team and she believes the court is where she belongs! "Playing basketball teaches discipline, patience and how to accept a few failures in the right way." She loves the opportunity to build additional relationships and she is allowed to travel with the team.

As young ladies, they acknowledge that foster care is their fate, but they know their heads must be held high while they look to the future. They know their future plan is the Girls' Haven program; both planning to age out of care that includes entering into our Independent Living Program once they reach 18 years old. When asked why...Hanna says, "because I feel safe and the staff care about us and this place is the best opportunity for me to graduate high school and attend college." Sarah is confident that she will continue to excel in basketball and her dream is to attend Texas A&M University; hopefully with a basketball scholarship offer.

As we work out our mission statement in the lives of Hanna & Sarah, we know beauty will grow from their ashes. We know the pain and loss will not be erased, but the safety and security they experience here combined with the intentional calling out of who they are will result in their thriving and growing in wonderful ways. We can glimpse these things because we have seen it with our other kids, but to Hanna & Sarah, the future still looks uncertain and unclear.

While GH only exists because of horrible loss, we believe that, as we are God's hands at work restoring our kids hope, **their great loss will be powerfully redeemed, and their impact will be even greater because they have overcome.**

Thank you for believing with us and for choosing to take part in this divine work of redemption at Girls' Haven.

\*names have been changed

Turning Tragedy  
to **TRIUMPH**  
[www.girlshaveninc.org](http://www.girlshaveninc.org)



**WE FIGHT.** | Because every child has a battle **>** (*greater than*) **they can face alone.**  
Your support allows us to do more than provide food and shelter.  
You help us contend for our kids' futures and overcome their pasts.



Your financial support is vital to the victories at Girls' Haven! **Will you join the fight?** It takes all of us. Your gift provides daily opportunities for our kids to discover their God-given value and be forever transformed.

Turning Tragedy  
to **TRIUMPH**  
[www.girlshaveninc.org](http://www.girlshaveninc.org)

An evening event benefiting **Girls' Haven**

# GALA

## An Evening Amid the Stars

Make plans to attend our annual fundraiser; Bella Notte, an Evening Amid the Stars, a gourmet four course Italian dinner and Italian wine parings on Friday, February 1, 2019 at the Event Centre in Beaumont, Texas at 6:30pm.

This elegant evening features live and silent auction with one-of-a-kind items, live entertainment and the opportunity to contribute to the betterment of many young girls' lives. This year's honorees are Exxpress Mart/TriCon and the Roy West Radio Show. Many sponsorship opportunities are available, as well as individual tickets starting at \$100.00. To reserve your spot or for additional information, call 409.832.6223 or visit our website at [www.girlshaveninc.org](http://www.girlshaveninc.org).

Friday, February 1, 2019 at 6:30pm

The Girls' Haven, Inc. Board of Directors  
Invites You to

# BELLA NOTTE

AN EVENING  
AMID THE STARS

A Four Course Gourmet Italian Dinner with Wine Pairings  
Live and Silent Auctions Benefitting  
**GIRLS' HAVEN, INC.**



For additional information, please call us at **409.832.6223** or visit our website at **[www.girlshaveninc.org](http://www.girlshaveninc.org)**

Turning Tragedy  
to **TRIUMPH**  
[www.girlshaveninc.org](http://www.girlshaveninc.org)



p. 09

## q and a:

with Jade Rayburn



Jade is the Development Director responsible for event and volunteer management, fundraising, marketing, grant writing, public and donor relations for Girls' Haven. Jade is a Beaumont native with a passion for service to better the lives of others. She recently was honored as a recipient for this year's Young Professional Organization's 40 under 40. In addition, she is the President of the Spindletop Rotary Club. Jade holds a degree in business management and has spent her career in non-profit development and community relations.

### **Q: How did you develop such a passion for working with children?**

**a:** I have always had a passion for serving others. My entire career has been in nonprofit, but working for Girls' Haven has been the most rewarding. Each day I get to interact with and get to know our girls. Each one has a unique story and special personality, making it even more apparent the importance of our work here. These girls have had such tragic experiences in their short lives and showing them, they are special and loved can literally change their entire future outcomes. Many of them believe they are worthless without hope for a future, but here at Girls' Haven we show them that they are more than their past and that they can choose to have a happy healthy future.

### **Q: Girls' Haven is a place where lives are nurtured, dreams are formed, and futures shaped. How do we accomplish this with each child?**

**a:** We have a *serious* responsibility to each child that walks through our doors; to show them what it means to be nurtured and lovingly guided. Many of our girls have had traumatic experiences they must overcome in order to heal. Every team member of Girls' Haven has that *serious* responsibility not only to our girls, but to the community. We must work tirelessly each day to ensure that our girls are prepared to successfully transition into the next phase of their lives, thus breaking the cycle of poverty and abuse.

### **Q: How does community support play a role in the success at Girls' Haven?**

**a:** We are greatly dependent on the generosity of our community to continue providing care and healing for the young girls entrusted to our care. Here in the Southeast Texas, we have been blessed with a community that not only embraces our mission to **Turn Tragedy to Triumph**, but is behind our efforts by sponsoring/attending our fundraisers, donating clothing, time, other needed items and stepping up anytime we have needs. Girls' Haven could not have grown into the organization we have become without our amazing community support. The saying, "it takes a village to raise a child" is true and we are eternally grateful for our community village.

### **Q: What's the punch line?**

**a:** Being part of the Girls' Haven team is one of the greatest honors of my life. Our team is responsible for restoring the lives of young girls. That's a responsibility not taken lightly. Knowing that each day when I come to work, I am part of something so much bigger than myself is extremely rewarding. As the Development Director, I am responsible for raising the funds required to continue serving our precious girls. Knowing that every grant that I write... every phone call I make to donors...every event planned...is for the restoration of lives at Girls' Haven; making it all rewarding!

Turning Tragedy  
to **TRIUMPH**  
[www.girlshaveninc.org](http://www.girlshaveninc.org)

**WE'D LIKE TO INTRODUCE** *the newest members* of our team.  
We're not in it for the income...we're in it for the outcome!

# dedicated <sup>new</sup> faces

We are excited to present our four new team members; Leslie Valentine, Amber Clark, Mandy Jay & Brittany Watts.

**LESLIE VALENTINE**  
Independent Living  
Coordinator

Enjoys traveling, singing,  
spending time outdoors with  
her dogs and helping people.

**AMBER CLARK**  
Program Director

Enjoys spending time with her  
family, live music and  
traveling.



**MANDY JAY**  
Business Office Manager

Enjoys dancing, shopping,  
traveling, spending time with  
family and making a difference  
in the lives of others.

**BRITTANY WATTS**  
Youth Care Specialist

Enjoys shopping, going to the  
gym, traveling and watching  
Netflix.

## anniversaries **JANUARY through DECEMBER**

### CELEBRATING



**Rob Turner**  
**20 years**



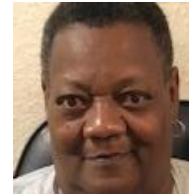
**Alan Apperson**  
**14 years**



**Eureka Edwards**  
**14 years**



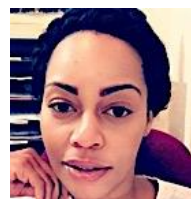
**Jackie Shello**  
**13 years**



**Freddie Banks**  
**10 years**



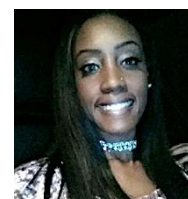
**Lilly Lyons**  
**10 years**



**Heather Bobb Young**  
**5 years**



**Nikki Bell**  
**1 year**



**LaSheckitha Lalleur**  
**1 year**

Turning Tragedy  
to **TRIUMPH**  
[www.girlshaveninc.org](http://www.girlshaveninc.org)



**Girls' Haven** welcomes Amber Clark as the new Program Director of Residential Services and her husband, Gregory, daughter, Abigail (5), and son, Gregory III (4 months). Amber comes to us from the City of Beaumont as Operations Manager. In her free time, she enjoys being with her family, live music and traveling.

Amber Clark graduated from the University of North Texas in Denton, Texas with a Master's Degree in Educational Leadership. She is a Beaumont native; graduated from Westbrook High School. She has previous administrative and field service experience overseeing programs within the senior center and the community during her time working for the City of Beaumont. She was responsible for planning on-site safety drills & delivered monthly staff in-services.

Prior to working for the City of Beaumont, she was a Youth Volunteer Supervisor with the Court Appointed Special Advocate (CASA) of Southeast Texas. As a supervisor, she was responsible for monitoring and addressing volunteer's growth in skills and advocate on their cases, ensuring that children assigned to the CASA program received appropriate advocacy services. In addition, she was responsible for providing support to the Executive Director by attending training, recruiting and fundraising events.

Amber has experience as a 2<sup>nd</sup> grade teacher for Tekoa Academy of Accelerated Studies STEM School where she helped create a flexible elementary grade program and a class environment favorable to learning personal growth to establish effective rapport with students and to develop skills, attitudes and knowledge needed to provide a good foundation for upper elementary grade education.

Amber is currently a volunteer for Relay for Life (American Cancer Society) and is a Southeast Texas Young Professionals Organization Club Member. Prior to joining Girls' Haven, Amber served as a Board of Director for Boy's Haven of Beaumont.

As a member of the Girls' Haven team, she is responsible for the oversight and operations of the residential programs. As the PD, she has joined other members of our team to continue ensuring the safety and security of the residents and staff. Girls' Haven welcomes her!

## **BEAR ONE ANOTHER'S BURDENS - GALATIANS 6:2**

A man is walking down the street when he falls into a pit. The walls are so steep he can't get out. A doctor passes by and the guy shouts up, "Hey you. Can you help me out?" The doctor scribbles a prescription, throws it down in the hole and moves along.

A government official comes by and the man yells, "I'm down in this hole, can you help?" The official replies, "Isn't there a law about avoiding pits?" and hurries on.

Then a friend walks by, "Hey, can you help me out?" the man calls, and the friend jumps into the hole. Our guy says, "What are you doing? Now we're both down here!" The friend says, "Yeah, but I've been here before and I know the way out."

-Leo McGary,  
*The West Wing*  
(modified)

Turning Tragedy  
to **TRIUMPH**  
[www.girlshaveninc.org](http://www.girlshaveninc.org)







3380 FANNIN ST  
BEAUMONT, TEXAS 77701

A publication of Girls' Haven, Inc.

p. 12

## from *the* Executive Director



Your financial commitment has fueled the process for more than 24 years, impacting generations of kids...who have broken the cycles they grew up in.

- Clay Thomas

As the end of the year approaches, our team at **Girls' Haven** continues looking forward to the incredible opportunity of working with our residents in care. Today I was reminded of the words of John F. Kennedy, "Children are the world's most valuable resource and its best hope for the future." We strive to invest in the lives of our residents, helping them find a sense of belonging that will support maximizing their full potential.

Over the past few months one of my favorite parts of being on the team at **GH** has been watching our dedicated staff truly foster a spirit of gratitude that is contagious. As of a member of the team, I know that each of us must be able to show love and compassion for our residents. Understanding that this job is a passion, not a passion to do things right, but to always do the right thing. We know that fate rarely calls upon us at a moment of our choosing. We must love what we do. We are doing something that is big and beautiful and greater than us.

Our deep connection with a community of caring, kid loving, life impacting individuals, has resulted in nearly 25 years of ministry to kids and their future families. As we move into our next 25 years we will value our roots and honor our relationship with Beaumont and all of Southeast Texas by continuing to accomplish our mission for kids, so they will understand how valuable they are. We are so thankful for the opportunity to honor our place in the history of Beaumont's and all of Southeast Texas' benevolence to change the future of our community through kids.

Showing compassion, love and support for each child, demonstrates individual responsibility that is displayed everyday by each of our team members. As we press forward, it is recognized that our tasks are challenging; however, as you continue your prayers and support for us, we are confident that God's plan will be fulfilled. I would like to thank the hundreds of volunteers, donors, Beaumont and all of the Southeast Texas community for your support in our efforts.

Blessings,

*Clay*

Clay Thomas, M.S., LCCA  
Executive Director of Girls' Haven, Inc.