

We know community is  (*greater than*) going at it alone
BECAUSE OF **BUSINESS OWNERS** such as

Manning's



**Texas
on Wheels**

Turn to page 5 and learn more about their support for Girls' Haven



GIRLS' HAVEN

August 2020 - Vol. 4



ONE child...ONE life...

a **WORLD** of **OPPORTUNITY** at **GH**  est 1994
www.girlshaveninc.org

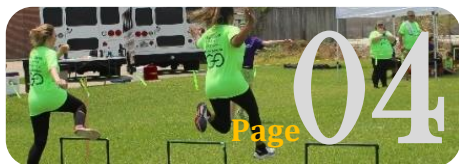
We have a deep desire to give both of these to each child that comes to Girls Haven:

ROOTS to nourish & establish them, to ground them in who God says they are & to give them room to grow with people who embody home;
WINGS that they may soar beyond whatever hinders them & achieve much more than they have planned for themselves.

page



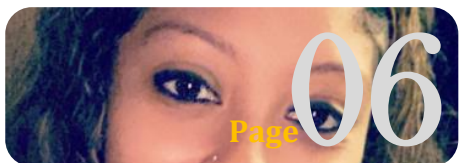
03 who we are and i will rise



04 information and announcements



05 from the heart and restoring hope



06 q and a: with Kaylee Henry and a friendly new face with Destinee Simon



07 campus activities



08 a word from the executive director



a side note

with Kristey Anthony, Youth Care Specialist

The heart of the work with children at Girls' Haven is facilitated day and night by our Youth Care Specialists. The role of a YCS is essential to relationship building, teaching skills and appropriate behaviors to children who suffer from traumatic experiences. As one of our committed Youth Care Specialist, Kristey has discovered that keeping a right attitude is so necessary during tough times when working with our kiddos. "My outlook affects my future. It can lift me high over circumstances or leave me badly battered by what's going on around me, depending on where I let my thoughts take me."

God has called each of us to be agents of His love and to accomplish His will on earth where we are, even in our vocation - *particularly* in our vocation. Let us joyfully and faithfully take hold of this holy calling.

We gotta walk the walk. If we want our kids to be thankful, we must be thankful when they are around to hear it.

give

Your financial support is vital to the victories at Girls' Haven!

OUR MISSION

Girls' Haven seeks to provide a safe, nurturing environment for girls affected by physical, sexual or emotional abuse, neglect, exploitation, abandonment or severe family dysfunction

ONE child...ONE life...a WORLD
of OPPORTUNITY at GH
www.girlshaveninc.org

WHO WE ARE

03
page



- **We Serve** primarily children referred by the foster care & juvenile justice systems, private parties, counseling networks, churches & schools
- **Ages 6 through 17** for basic care services
- **Ages 18 through 22** for Independent Living
- **Our Community** is at the heart of Girls' Haven. From the beginning a product of this community, through our 25 plus years: you have poured in your time, heart, gifts, and funds
- **Our Funding** comes primarily through community donations and grants:
Only **33%** of our funding come from the state
- **Your Gifts Allow Us to Fight for Our Kids**, giving them much more than food and shelter
- **Our Success** shows itself over time:
 - In the Short Term** as our kids realize their own worth and the value of others, they become leaders in their areas of influence and a blessing to the world around them
 - In the Long Term** as they form their own families and carry the values and truths they've learned at Girls' Haven into adulthood, creating generational change
- **We Are Grateful** as we look to the future knowing we can continue to trust you, our community, to include us in your story

I WILL RISE

Learning basic life skills through relationships

Proverbs 22:6 tells us that we are to "train up a child in the way he should go, and when he is old, he will not depart from it." This verse well represents what Girls' Haven is all about, which is to take these kids from a tough environment and work with them, care for them and help them reach their God-given potential. We have extraordinary staff that work at Girls' Haven who are willing to take extra time outside of their normal work day to teach our residents basic life skills that will enable them to effectively handle issues and problems commonly encountered in daily life. An example of this teaching came from our Clinical Director, Courtlyn Hale, who took the time to show residents how to properly maintain a vehicle. In addition to learning the basics of vehicle maintenance from Ms. Courtlyn, they were able to experience relationship building that is the cornerstone of our program.

For many of these children, they are just looking for answers. *Sometimes, we need an earth angel to snatch us out of our own limiting beliefs.* When they lose their family and enter the foster care system, there goes the great decline of their self-esteem. So, for the next few days, next few months and possibly for the next few years, they lose their smile, they lose confidence and question if they are ordinary. Ordinary is very, very easy to do. Just go out there and do nothing and you're ordinary, and it's crowded. But the moment children put some extra on their ordinary, now they are extraordinary. And when they can see that little version of themselves, that girl who's still looking for validation. "Am I beautiful in my uniqueness? Can I change the world?" And when they look eye-to-eye with an example of who they are becoming, all of a sudden they stop asking the world for permission. They stop wondering, "Do I fit in this story?" And they realize that they are the author of their story. Who they are, their extraordinary, is waiting to be born through them.

Thanks to Ms. Courtlyn and the rest of our team, our residents are finding new ways to think and problem solve. They are recognizing the impact of their actions and are being taught to take responsibility for what they do rather than blame others.



OUR VISION

To restore hope and provide healing; **ONE Child at a time...ONE Life at a time...creating a WORLD of OPPORTUNITY for children at Girls' Haven.**

ONE child...ONE life...a WORLD
of **OPPORTUNITY** at GH
www.girlshaveninc.org



Junior League of Beaumont

Thank you, for volunteering your time to work out with our residents on our campus. In addition, we received a grant from JLB that allowed us to purchase a music sound system for the facility and the girls' rooms.

We don't get to rewrite our children's pasts, but we do have the awesome opportunity and responsibility to help write their futures.



Beach House Vacation

The girls were able to go to a beach cabin this summer. They had the best time and we are so grateful they had the opportunity before school started! Thank you to Dana Johnson for letting them stay at your beach cabin, Amanda Green for donating all the food and drinks they could ever want, Katie Meeks for donating the money for them to go to the water slides, and Ocean Grille for donating pizza for lunch!

The Providence of God and good people are still at work, acting and intervening for our amazing children.

GH wish list

In-kind contributions allow you to participate in the ministry of Girls' Haven by providing goods, skills, or services. And they are tax deductible contributions.

ITEMS

- New Clothing (*teen ages*)
- 10 Gameboys
- MP3 Players
- Welcome Baskets (*for new residents*)
- Comforter Sets (*twin size for all ages*)
- Clock Radios (*for resident bedrooms*)
- Headphones (*for tablets*)
- Lawn Furniture (*for our playground courtyard*)
- Campus Storage Building (*for tools, bikes & sporting equipment*)
- 6 X 12 V-Nose Enclosed Cargo Trailer (*for hurricane evacuation preparation*)
- Lawn Mower (*zero turn preferred*)

2020 Girls' Haven 2nd Annual Field Day

A special thanks to the event sponsors: Katherine Ramsey, Matthew Gilby, Callyn Hale, Grant's Guardians, and Northpoint Community Church



from *the* heart

with Manning's Texas on Wheels



Tonia & Chris Creason
Owners

This summer, activities for the kiddos at Girls' Haven were limited due to the COVID-19 virus pandemic. For 16 straight weeks of quarantine, the staff at GH were creative in developing campus activities and what a job they did keeping the residents busy and safe. Upon being released from quarantine, the first off-campus activity invite came from Tonia & Chris Creason, owners of Manning's Texas on Wheels in Beaumont, Texas. The invite included the girls and our staff being the only customers allowed for hours of enjoying skating, pizza, and fellowship.

Manning's Texas on Wheels had been involved with Girls' Haven for many years before they took over the business. They have stayed involved and have seen how the girls get to *be kids* when they are at the skating rink. Many of our girls have become close with the Creason's and have opened-up to them about their circumstances and past trauma. They want to help in the healing process to give them the motivation to make the right decisions. In the past, some of the girls have worked for the Creason's at the skating rink. "Our focus is the kids. We love to teach them what responsibility and hard work can do. We hope that when they leave from skating, they feel just a little better. Whether it's because they had a good time skating or because we were able to help them work through their issues."

Tonia & Chris Creason have been extraordinary supporters of Girls' Haven. Every time we turn around they are making thoughtful donations, supporting our kids and their activities. As a family, they are always looking for ways to impact our children at GH and the community of southeast, Texas. We are so thankful for their caring and support, and we are honored that they were willing to share their own experiences with us.

The past few months, the COVID-19 pandemic has brought many challenges to Girls' Haven. As part of the Texas safety net, child welfare does not stop or even slow down during a pandemic, rather the services are growing in importance and are more complex to provide. We will continue to study the short and long-term data to better understand system trends as a result of COVID-19; however, we know the essential needs for foster children, and we will continue our commitment.

The past challenging months have been filled with successes. Some were small steps in the right direction, some were an accumulation of feats and several were major life-changing achievements. Some of those achievements included our passionate team playing an essential role successfully transitioning 13 children from our facility back into their homes with family members or with adoptive and/or foster parents. Although we are sad when we lose children we have built positive relationships with, we are committed to **restoring** hope in **children** and **families**; therefore, successful discharging of children is a win-win for us! Thank you, to all staff and volunteers that serve at GH.

restoring hope

in **children** & **families**



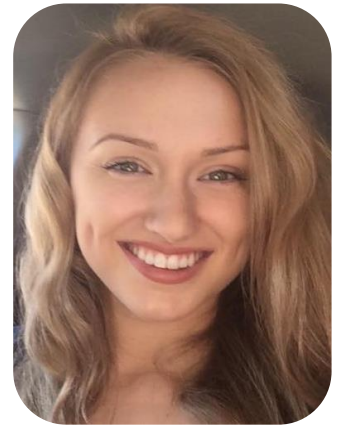
**WE
BELIEVE.**

The Apostle Paul wrote in Romans 5:3-4 that whatever trials and tribulations befall us, suffering leads to perseverance, perseverance creates character, and character leads to hope. This is our challenge with the children we care for: we must demonstrate to them with patience and love that they are safe, they are cared for by people they can trust, and their journey through childhood can continue through character and hope.

ONE child...ONE life...a WORLD
of **OPPORTUNITY** at GH
www.girlshaveninc.org

q and a:

with Kaylee Henry
Development & Public Relations Director
B.S., Communication from Lamar University



Q: How did you develop such a passion for working with children?

A: For several years before working at Girls' Haven, I had wanted to work for a non-profit. When you work for a non-profit you know that the time and energy you put in is for a higher purpose. When I first walked through the doors of Girls' Haven for my pre-interview, I had a feeling that I've never had before. I knew I had to work here, and God was calling me to this particular place. Seeing these girls thrive and grow in the care of Girls' Haven has been the most fulfilling time in my life.

Q: Every child that comes to Girls' Haven needs to be healed. How do we accomplish this with our kids?

A: The most important part of our job here at Girls' Haven is building relationships with the girls, building trust, and raising their self-esteem. The majority of our girls have been through traumatic experiences where close family members have made them feel worthless and alone. It is our main priority to help the girls feel empowered again and that they are capable of doing anything they set their minds too.

Q: What are some of the life-changing experiences that we bring to our kids that live here?

A: We expand their horizons and show them what all life has to offer. We have created experiences by taking the girls on yearly trips. Last summer, Wesley United Methodist Church, donated the funds for our girls to see Cirque du Soleil in San Antonio, Texas. The girls were able to experience staying in a nice hotel, nice dinner, and watched a show they never would have seen otherwise. This summer, due to the COVID-19 virus, we weren't able to take them on as big of road trip; however, Dana Johnson donated her beach cabin and the girls were able to stay on the beach for a few days. Majority of our girls had never been to a beach before. We are grateful to have such amazing donors who help give our girls these life changing experiences.

Q: Why is it important that we establish and maintain positive relationships with our kids at Girls' Haven?

A: Maintaining positive relationships with the girls is vital to making a difference in their lives. Every GH staff takes the time out of their day to spend with the girls and work on building trust. It is important that they know we are here for them and that they can talk to us whenever needed.



friendly new face

Girls' Haven welcomes Destinee Simon, B.A.; Social Work as Case Manager for Residential Services.

Destinee is a graduate from Lamar University of Beaumont, Texas and was a member of the Alpha Delta Mu Social Work Honor Society. She joined the Girls' Haven team in June of 2020 as a Case Manager. She chose the social work field and to work at GH because she is passionate about helping others and has always wanted to work with children and adolescents. Destinee, enjoys reading, shopping, hanging out with friends, and spending time with family. She is currently enrolled at the University of Texas Arlington seeking a masters degree in social work. Her goal is to eventually become a Licensed Master Social Worker (LMSW) to further her career. She is excited to be a Case Manager and look forward to building a greater bond with the residents and staff.

**WE
EXPLORE.**

We are not satisfied with the status quo or the path of least resistance; however, good it might seem at the time. We press on to be ever more effective, and we refuse to settle for good enough.

ONE child...ONE life...a WORLD
of **OPPORTUNITY** at GH
www.girlshaveninc.org



Letter from a former 3-18-2020
GH resident

To GH,

Y'all have made me a better person even when I didn't act like it. Y'all will always be family to me, even though we all jumped at each others throats. (That is exactly what families (like ours) do.)

To kids:
Val, Cheyanne, Mariah, Aleigha, Hailie, D.D., Tameco, Katlynn, Alyssa, Leslie, B.B., Homeboy, and others!

Y'all have impacted me greatly as a peer in this house. And remember:
"You have to be odd to be number one."
Don't think for one second that when I leave and get to my place, that I won't call y'all. BECAUSE I WILL!

To Staff + Administration:
Y'all have always seen and also brought out the best in me... no matter what. I will not forget that you guys showed me tough love, and discipline because y'all wanted the best ~~come~~ for me and my future.

This number is for the Staff + Admin:
Ask for Hariso, B Hardin Cottage -
[Redacted]
Love (Turrell)
Y'all Hariso





These kids are coming to our program very damaged. They've been hurt and hurt again. We are giving them the hope to know that they don't have to live how they lived before coming to Girls' Haven.

A WORD from the Executive Director

When I see the Girls' Haven program up close and personal, behind the therapeutic services where we provide life skills, preparation for adulthood, recreational activities, individual and group therapy; the workmanship that I see is astounding and that points right at the people (our staff) that do this. When you integrate all that together, it results in what I think has been a marvelous program at Girls' Haven.

It is upon this foundation that we operate our licensed 32-bed therapeutic facility, and an Independent Living Program for young adults as continued care as they pursue college or a career. The majority of our kids now come from situations of abuse or neglect. In a safe and joyful atmosphere, our programs encourage the kids to *be kids* and work to develop areas of passion so that each child might reach her full potential. We seek to provide them the tools and security necessary to explore and to experience success and failure safely with confidence of continued relationship. The heart; however, is the consistent love and compassion of our staff as we seek to bring up these individuals – challenging them and providing them with a variety of opportunities so that they might grow into well-rounded, Christ-centered people.

Our duties and responsibilities are well documented on paper but are often told best through our stories. Throughout the year, these stories are told via our newsletter, website, Twitter, and Instagram or as you visit the campus. Please visit often!

Your stories are being written right now at Girls' Haven through your love, prayer, time, and gifts. We marvel at how extremely fortunate we are to have you in our family as we undertake the carefully planned, but often uncertain, process of restoring precious young lives. The commitment is big, but together we play a major role in the stories being written in the lives of children who are entrusted to our care. **THANK YOU** for choosing us as you write the story of your life.

If you are reading this and are not a part of the GH family, please join us! We can't wait for your story to be intertwined with and written in the lives of our children. Come walk the path with us. It is a path of risk, exploration, involvement and doing; however, it is also a path of love and blessings.

BLESSINGS TO YOU AND YOURS,

Clay

Clay Thomas, M.S., LCCA
Executive Director of Girls' Haven, Inc.

“FOR I KNOW THE PLANS I HAVE FOR YOU,” declares the Lord, “plans to prosper you and not to harm you, plans to give you hope and future.”

Jeremiah 29:11

{ printing brought to you by
Learn about Kirksey's at kirkseys.com or call 409.899.1771 }

KIRKSEY'S
SPRINT PRINTING
RUBBER STAMPS & SIGNS



**3380 FANNIN ST
BEAUMONT, TEXAS 77701**
A publication of Girls' Haven, Inc.